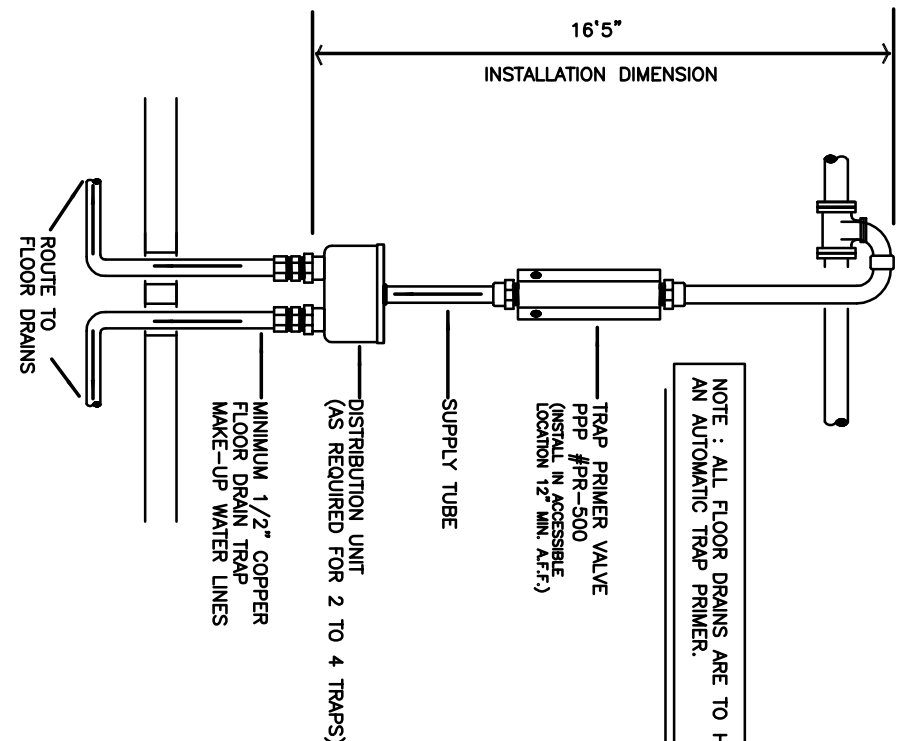
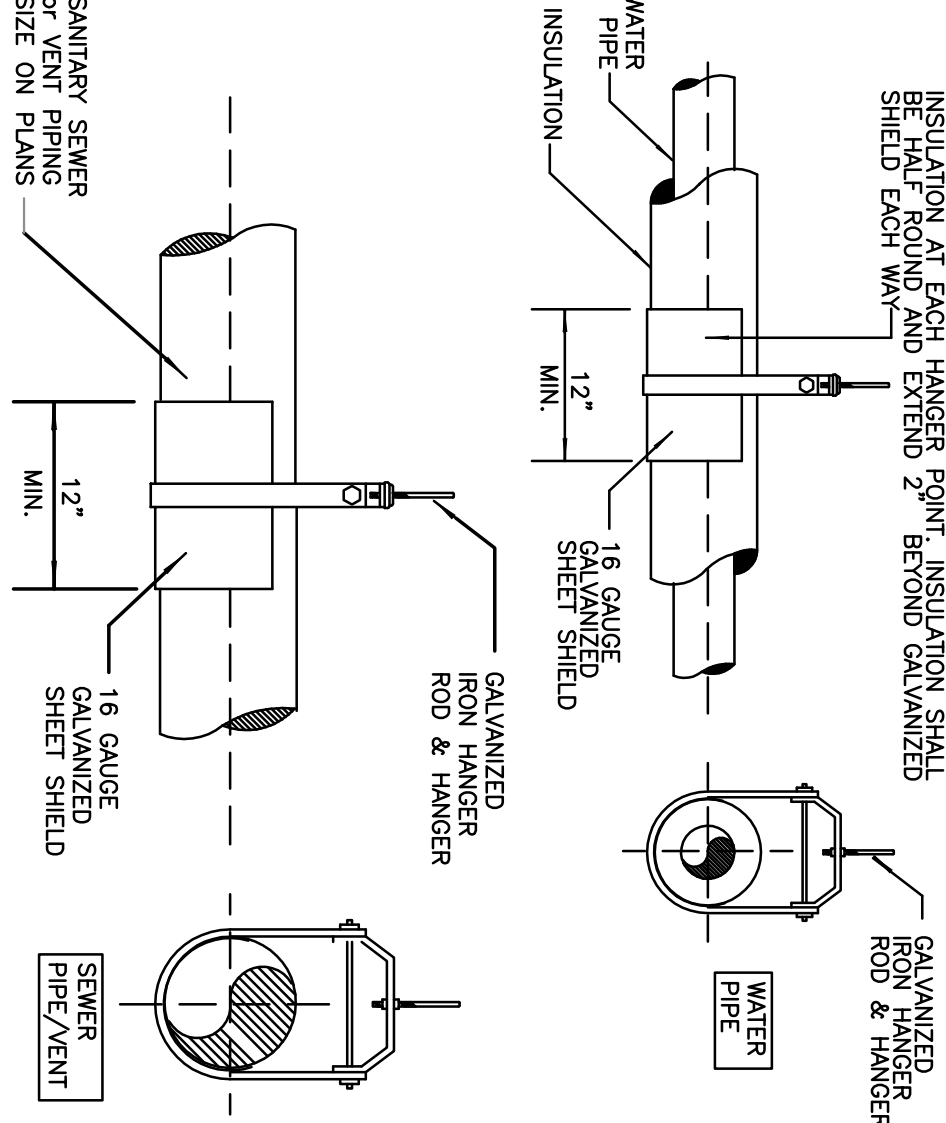


Diagram illustrating the connection of a vertical pipe to a horizontal structure (likely a roof or floor) using an adjustable clamping collar. The diagram shows the pipe passing through a wall, with the collar securing it. Labels include: HUB JOINT, ADJUSTABLE CLAMPING COLLAR, FILL, WEATHER MEMBRANE, and FINISHED FLOOR.

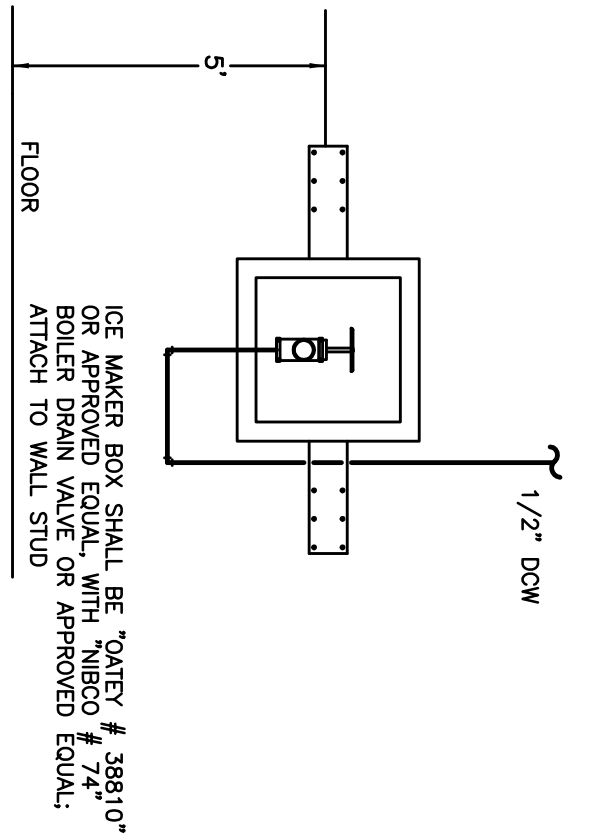
4 FLOOR CLEAN-OUT DETAIL



3 TRAP PRIMER + DISTRIBUTION INIT



2 PIPE SUSPENSION DETAILS



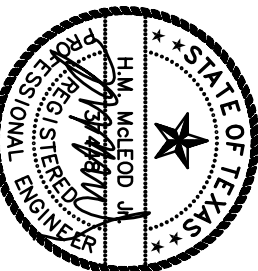
1 ICE MACHINE VALVE BOX

PROJECT:

CONSTRUCTION FOR Demeris Barbecue

1702 West Loop North
Houston, Texas 77092

ENGINEER:



H.M. McLEOD, P.E.
4727 MERWIN ST. SUITE B
HOUSTON, TEXAS 77027
OFFICE: (713) 961-2696
FAX: (713) 961-5691
CELL: (713) 806-1846

Firm Registration:
H. M. McLeod, P.E. #F-36767

© 2011 H.M. McLeod, P.E.

Downings, written material, and designs
concepts shall not be used or
reproduced in whole or part in any
form or format without prior written
consent of H.M. McLeod, P.E.

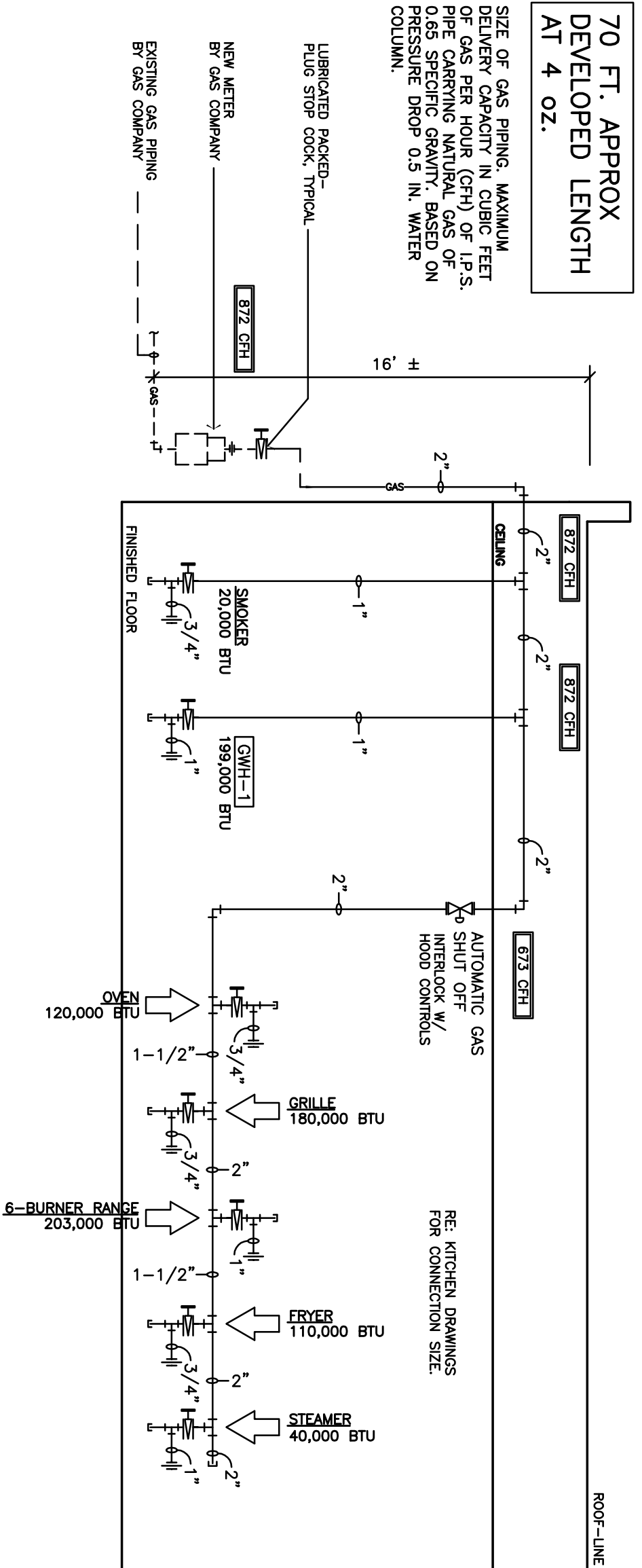
DATE	6/17/11
PROJECT #	11141
SCALE	as noted
DRAWN BY	---

SHEET NAME:

PLUMBING DETAILS

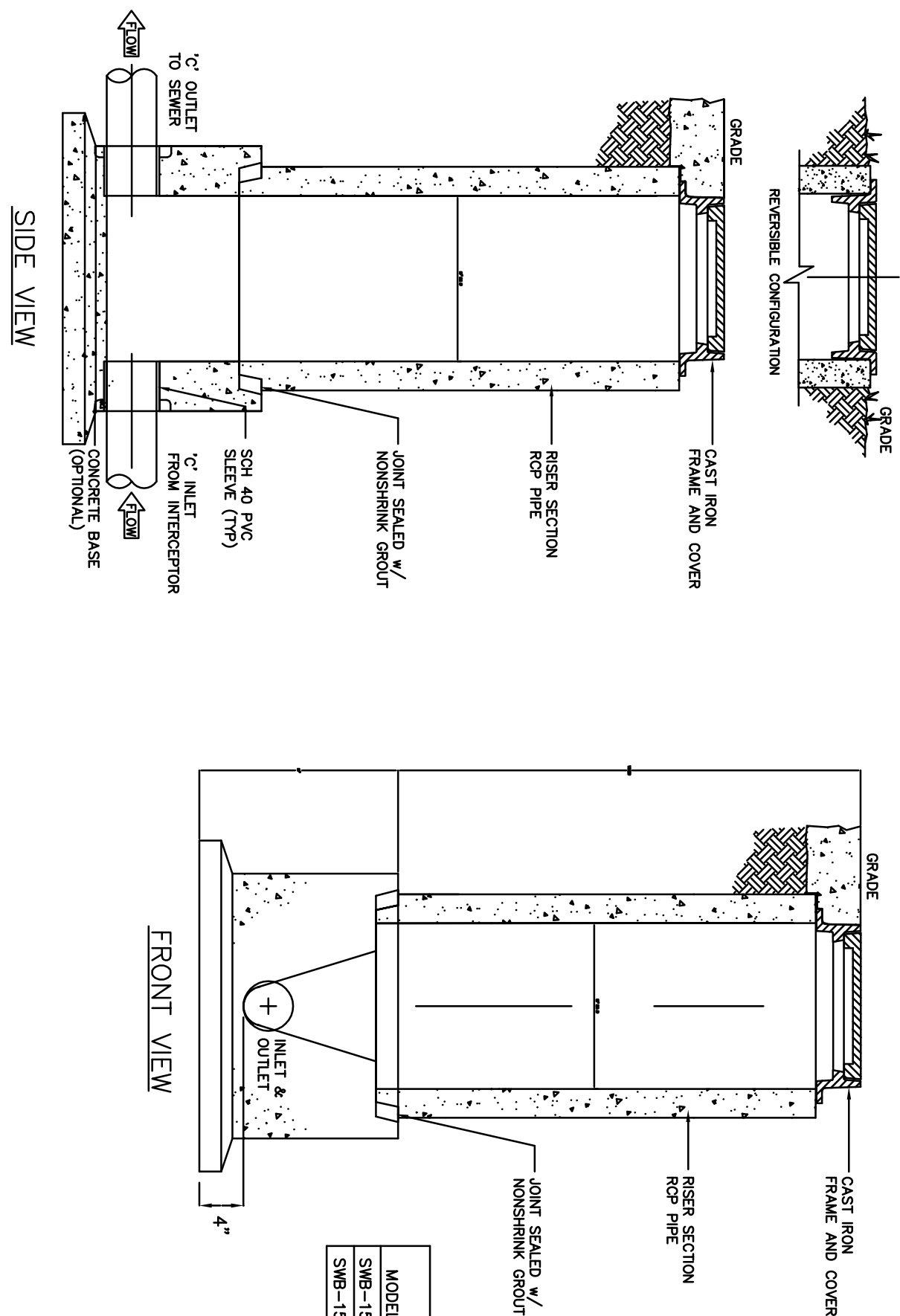
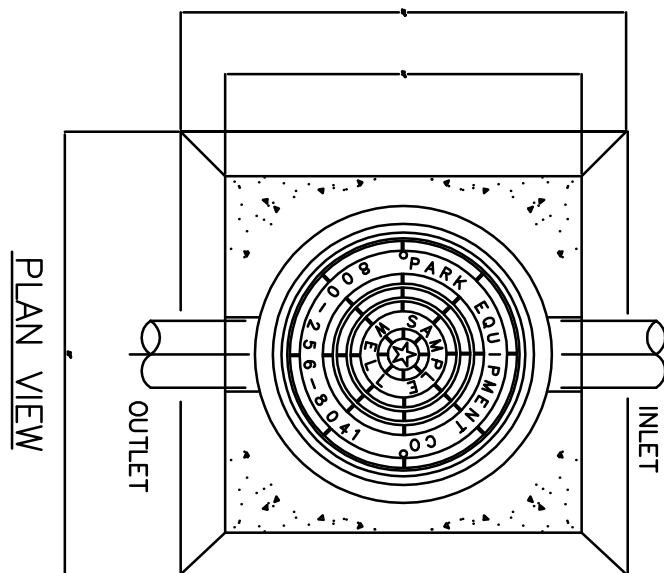
SHEET NUMBER

P-5



6 SAMPLE WELL DETAIL

- NOTES
1. SWAMPING WELL MUST BE INSTALLED UNDER A SEPARATE PLUMBING PERMIT.
2. USE 15" T60 R.C.P. FOR INSTALLATION FOR INSTALLATION 6'-0" DEEP AND LESS.
3. USE 24" T60 R.C.P. FOR INSTALLATION GREATER THAN 6'-0" DEEP. (STD RING AND MAN COVER REQUIRED)
4. SWAMPING WELL MUST BE SET IN A CIRCULAR OR SQUARE CONCRETE PAD (1'-0" DIA. OR GREATER) WITH CURB OR BARRIER (OR FENCE).
5. INSIDE INSTALLATION NOT PERMITTED, WHERE OUTSIDE INSTALLATION IS POSSIBLE.
6. INSTALLATION INSIDE BLDG MUST BE POURED IN PLACE (15 MIN) NO CONCRETE PUMP IS PERMITTED. (AIR-TIGHT COVER REQUIRED)
7. U/LINI INSTALLATION MUST BE 4" ABOVE FINISHED GRADE.
8. DOME & SIDEWALK INSTALLATION MUST BE BROUGHT TO FINISHED GRADE
9. TO BE INSTALLED ON PRIVATE PROPERTY, IN AN ACCESSIBLE LOCATION TO CITY PERSONNEL.



GRADE	MODEL	CAPACITY GPM	GROSS COP. (LBS)	EMPTY WT (LBS)	LENGTH IN	WIDTH IN	HEIGHT IN	INLET FL	OUTLET FZ
0-1500	500	500	1,200	7,000	7'-0"	4'-4"	4'-6"	3'-3"	4'-2"
0-1750	750	750	1,700	10,000	7'-0"	4'-4"	4'-5"	4'-5"	4'-6"
0-2000	1,000	1,000	2,300	13,200	8'-0"	5'-0"	6'-0"	4'-9"	4'-7"
0-2500	1,500	1,500	24,000	9'-2"	5'-8"	7'-0"	5'-9"	4'-9"	4'-6"
0-3000	2,000	2,000	4,600	20,000	9'-2"	6'-0"	6'-0"	4'-9"	4'-6"
0-3500	2,500	2,500	5,700	27,000	13'-0"	7'-0"	7'-0"	5'-9"	5'-6"
0-4000	3,000	3,000	6,900	30,000	13'-0"	7'-0"	8'-0"	6'-6"	6'-6"
0-4500	3,500	3,500	8,300	33,000	13'-0"	7'-0"	7'-6"	7'-6"	7'-3"
0-5000	4,000	4,000	9,240	36,000	13'-0"	7'-0"	8'-6"	8'-6"	8'-3"

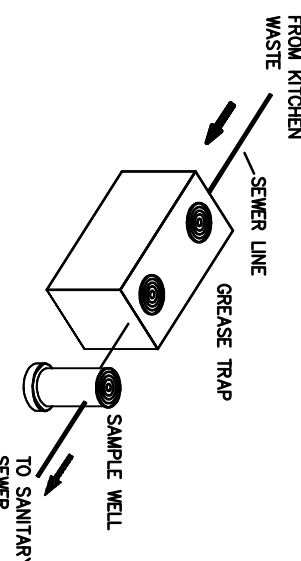
OTHER SIZES ARE AVAILABLE. CONTACT US FOR MORE INFORMATION

Engineering Data

The grease interceptor is structurally & hydraulically engineered to conform to regional plumbing codes recommended in most cities. Consult with local authorities for specific application requirements.

certified by a licensed professional engineer.

Consult with Park Equipment Company for exact excavation dimensions & shipping information.



Specifications

Typical applications include commercial and industrial food service kitchens where excessive grease may interfere with the proper drainage of the sewer system. The grease interceptor is generally buried below grade for gravity flow sewer systems. A sample well is utilized on the outlet side for sampling by the local water authority.

Specifications

CONCRETE : Class 1 concrete with design strength of 4500 PSI at 28 days. Unit is of monolithic.

baffle required, slide-in type is not acceptable)

REINFORCEMENT: Grade 60 reinforced with steel rebar conforming to ASTM A615 on required centers or equal.

C.I. CASTINGS: Manhole frames, covers or grates are manufactured of gray cast iron conforming to ASTM A48-76.

cross 30. minimum shall be nominal 24 inch diameter and be traffic duty.